



# EVENT GUIDE

APRIL 2025 · ISSUE 140

## love your library

National Library Week  
April 6th to 12th

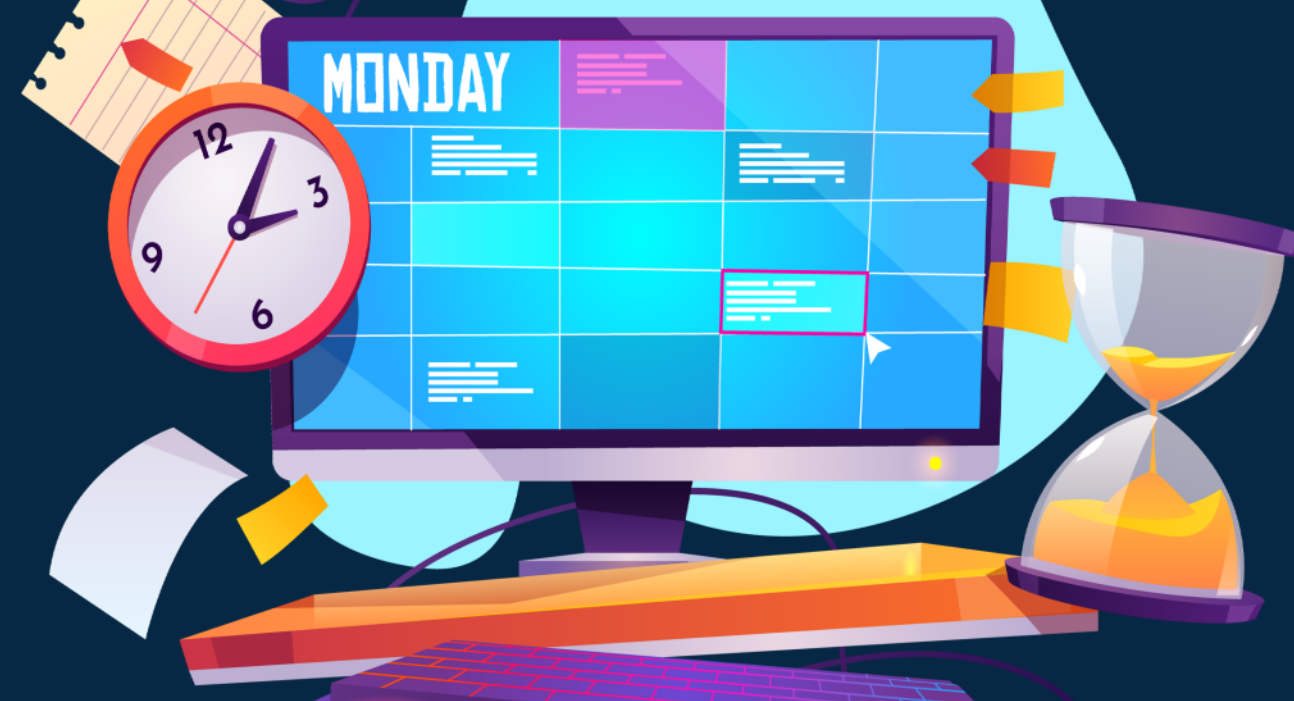
*Celebrate with  
RPL all month!*



**SCAN HERE**  
TO VIEW & REGISTER  
FOR EVENTS



## Digital Calendar



**SCAN HERE**  
TO VIEW & REGISTER  
FOR EVENTS

**Want to register for a library program?**  
**Check out our online calendar where you**  
**can reserve a meeting room or register for**  
**library programs and events! So easy to use!**  
**You can search programs at any and all**  
**branches and filter by age, location and more!**



# Book and Writing Clubs for All Ages

## The Southern: A Book Club Westside Regional Library

**Tuesday, April 1, 10:00 am to 11:30 am**

Join us on the first Tuesday of the month for book talk, and all things Southern. Some books are set in the South, while others are written by Southern authors ranging from classic to contemporary. *Looking for Salvation at the Dairy Queen* by Susan Gilmore is this month's southern jewel. There's an empty seat just waiting for you! Contact 318-442-2483 for more information.

## Kids' Book Club

Libuse Branch

**Tuesday, April 8, 6:00 pm to 6:30 pm**

Kids' are invited to read *The Explorer's Code* by Alison K. Hymas and come to the Libuse Branch Library for snacks and a book discussion. Contact 318-443-7259 for more information.

## Triple-A Book Club

Martin Luther King, Jr. Branch

**Tuesday, April 8, 5:30 pm to 7:00 pm**

Join the club on second Tuesdays to discover, read, and discuss books by African American authors and others. This month we're reading *There There* by Tommy Orange. Books are available to request for participation Contact 318-445-3912 for more information.

## Little Bit of Everything Book Club

Westside Regional Library

**Monday, April 14, 6:00 pm to 7:00 pm**

If you enjoy reading a little bit of everything, you'll enjoy this book club, meeting each second Monday of the month. Join us this month to discuss *Demon Copperhead* by Barbara Kingsolver. Contact 318-442-2483 for more information.

## Teen Book Club

Libuse Branch

**Tuesday, April 15, 6:00 pm to 7:00 pm**

Teens are invited to read *Queen of the Tiles* by Hanna Alkaf and come to the Libuse Branch for snacks and a book discussion. Contact 318-443-7259 for more information.

## Ladies' Book Club

Libuse Branch

**Thursday, April 17, 6:00 pm to 7:30 pm**

Ladies are invited to read *None of This is True* by Lisa Jewell and come to the Libuse Branch for this potluck style book discussion. Registration is required as seats are limited. See the RPL digital calendar to register. Contact 318-443-7259 for more information.

## Main Mystery Book Club

Main Library

**Friday, April 17, 4:00 pm to 5:00 pm**

Time to uncover some mysteries! Our next adventure awaits in the pages of *The Da Vinci Code* by Dan Brown. Registration is required as seats are limited. See the RPL

digital calendar to register. Contact 318-445-2411 for more information.

## Daytime Book Club

Libuse Branch

**Monday, April 21, 10:30 am to 11:30 am**

Patrons are invited to read *The Funeral Cryer* by Wenyan Lu and come to the Libuse Branch for a book discussion. Registration is required as seats are limited. See the RPL digital calendar to register. Contact 318-443-7259 for more information.

## 18 to 80 Book Club

Martin Library

**Tuesday, April 22, 5:30 pm to 6:30 pm**

Join the Martin Branch Library for a multi-generational book club on the fourth Tuesday of every month from 5:30 to 6:30PM. This month we will be discussing *We Do Not Part* by winner of the 2024 Nobel Prize in Literature, Han Kang. As always bring your suggestions for the rest of the year. Contact 318-442-7575 for more information.

## Come Write In!

Main Library

**Tuesday, April 22, 4:30 pm to 5:45 pm**

Hone your writing skills in this monthly creative writing session! Participants write to suggested prompts or make progress on an existing project of their own, then share with the group for feedback. Contact 318-445-2411 for more information.

## The Next Chapter Literary Underliner's Book Club

Alfred Boyce Wettermark Branch

**Friday, April 25, 10:30 am to 11:30 am**

Join us on fourth Fridays for good conversation and loads of fun as we delve into fascinating titles in literary, popular, and historical fiction, fantasy, suspense, nonfiction, biographies, and more! This month we're reading *Grandma Gateway's Walk* by Ben Montgomery. Contact 318-793-5954 for more information.

## Cenla Author's Club

Westside Regional Library

**Thursday, April 24, 6:00 pm to 8:00 pm**

The Cenla Authors' Club is open to authors and writers of all levels and genres, and anyone interested in learning more about the book-writing process, even if you haven't written your first word (yet!). This month's speaker will be Dr. John Doucet. Dr. Doucet is one of the top educators in the state. He is a genetics professor and Dean of Sciences and Technology at Nicholls State University in Thibodaux, Louisiana. He is also a technical writer and educator, having created scientific writing courses for undergraduates and graduates, as well as a creative writer. His major area of interest is genetic anthropology and genomic bases of genetic traits in Louisiana populations, particularly the Acadian, which is his ancestry. Contact 318-442-2483 for more information.

# Book and Writing Clubs for All Ages

## Christian Fiction Book Club

Robertson Branch

**Thursday, April 24, 10:00 am to 11:00 am**

Join us each month as we read and discuss different books. This month will read *Between the Sound and the Sea* by Amanda Cox. Contact 318-640-3098 for more information.

## Robertson Book Club

Robertson Branch

**Tuesday, April 29, 6:00 pm to 7:00 pm**

The Robertson Book Club meets each last Tuesday of the month at 6:00 and is facilitated by Sonya Jeter. This month we're reading *The Note* by Alafair Burke. Contact 318-640-3098 for more information.

# All Ages Programs

## Book a Movie

Martin Luther King, Jr. Branch

**Friday, April 4, 5:00 pm to 7:30 pm**

Come join us for a showing of Moana 2! In Moana 2, Moana receives a call from her ancestors and sets sail to Oceania to explore new waters. The movie explores themes of identity, leadership, and balance. Registration is required as seats are limited. See the RPL digital calendar to register. Contact 318-776-5153 for more information.

## Crafty Saturdays

Hineston Branch

**Saturday, April 5, 10:00 am to 11:30 am**

**Saturday, April 12, 10:00 am to 11:30 am**

**Saturday, April 26, 10:00 am to 11:30 am**

Come in to enjoy a time to craft and be creative. There will be plenty of supplies from which to choose. Sometimes there will be guided crafts, other times it will be crafter choice. Contact 318-793-8461 for more information.

## National Library Week 2025

Martin Library

**Monday, April 7-11, 3:00 pm to 4:00 pm**

**Saturday, April 12, 11:00 am to 12:00 pm**

Millions visit libraries every week for a reason—there's something for everyone. From storytime for families and creative spaces for students to tech help for seniors, libraries connect us at every stage of life. Explore books, attend author talks, join workshops, or trace your genealogy. Visit the Martin Library during National Library Week, April 7–12, 2025, and share what draws you to the library! Enjoy daily demos of resources like Kanopy, Louisiana State Library Databases, Cricut, Button Maker, and more. Whatever draws you in, the library has it. Contact 318-442-7575 for more information.

## LSU AgCenter Hibiscus Roselle Presentation

Westside Regional Library

**Wednesday, April 9, 1:00 pm to 3:00 pm**

Join us for a presentation by Molly Lyles from the LSU AgCenter on Roselle Hibiscus! Roselle Hibiscus is an heirloom, open-pollinated flower variety that produces loads of edible calyces that are great for making teas, jams, sauces, and more! Learn about this fascinating plant and take home your own to grow. Registration is required as seats are limited. See the RPL digital calendar to register. Contact 318-442-2483 for more information.

## I ♥ RPL: Community Heart Unveiling

Main Library

**Thursday, April 10, 10:00 am to 11:00 am**

Libraries are the hearts of their communities, and we are in the heart of Louisiana! What better way to celebrate National Library Week than with the unveiling of our community heart created in cooperation with Explore Alexandria/Pineville and designed by local artist Gavin Bridges. Join us for the unveiling, photo opportunities, and light refreshments. Contact 318-445-2411 for more information.

## Community Easter Egg Hunt

J.W. McDonald Branch

**Saturday, April 12, 10:30 am to 12:30 pm**

Join us in our first Community Easter Egg Hunt. This is a great family activity to do with your loved ones. The Town of Glenmora, Police Department, Business owners, and Fire Department, and Glenmora Friends of the Library will be there as well. The egg hunt will take place at the Glenmora Ball Field (Optimist Field). 1000 Turkey Creek Rd., Glenmora La 71433. There will be face painting, crafts, and more. We look forward to a fun filled time with everyone. Contact the branch 318-748-4848 for more information.

## Neighborhood Forests Tree Giveaway! Every Branch

**Wednesday, April 16-22, During Open Hours**

Earth Week runs from April 16-22, and we will again be handing out free trees in partnership with Neighborhood Forests. We love trees! We want to give every child the priceless joy of planting and watching trees grow. Contact the branch you plan to attend for more information.

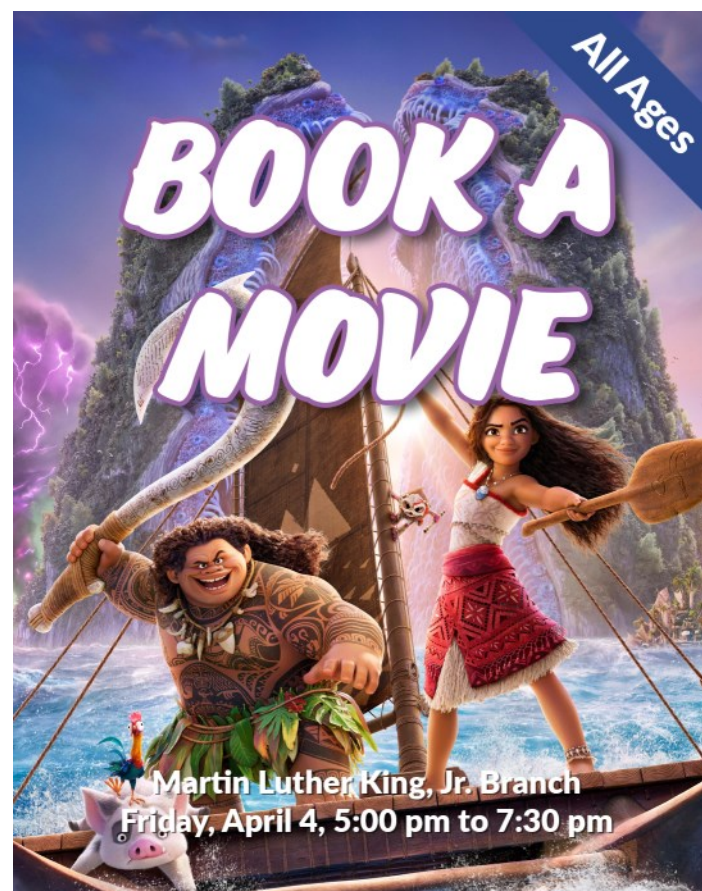
## Seeds 4 Trees

Westside Regional Library

**Wednesday, April 23, 10:00 am to 12:00 pm**

Kids need trees! Our seed guide, Lisa Delaney, will guide the children through the entire planting and growing process of tree seeds. The ultimate goal is for children to grasp the significance of planting tree seeds for the well-being of our planet. Registration is required as seats are limited. See the RPL digital calendar to register. Contact 318-442-2483 for more information.



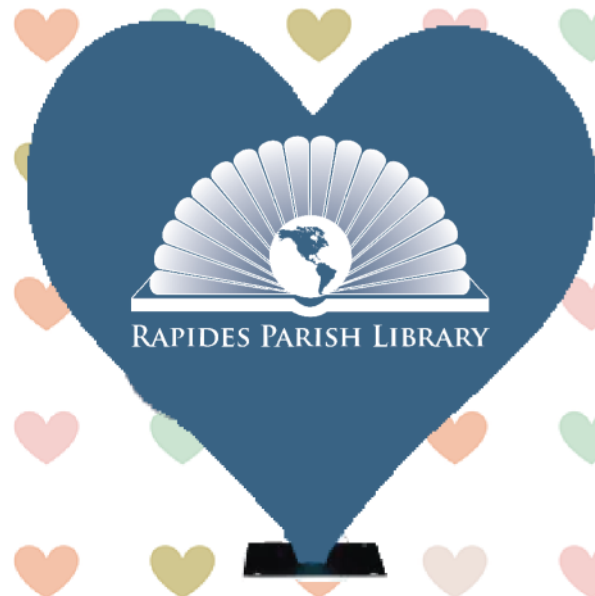


# You're Invited!

## Community Heart Project

**April 10, 2025 at 10AM ▪ Main Library Branch**

**Painted Heart Sculpture Unveiling & Light Refreshments**



Come celebrate the heart of our community (your Library) and the heart of our State (Rapides Parish) as we make a lasting impact on our community by transforming public spaces into dynamic canvases of art, culture, and pride as part of the APCVB's Community Heart Project!

Local artist, Gavin Bridges worked with RPL to paint a beautiful heart-shaped sculpture. RPL's heart will not only beautify our neighborhood but also tell the unique story of RPL and Central Louisiana.

*Please join us Thursday, April 10th at 10 am at the Main Library Branch at 411 Washington St. in Alexandria as we unveil our custom painted heart followed by light refreshments.*

### Crinkle Paper Easter Craft Kits

Hineston Branch

**Tuesday, April 1-19, During Open Hours**

Come decorate an adorable duck. This will be a tissue paper art work. Stay in and craft in the branch or grab and go with your craft kit. Kits are available during regular opening hours. While supplies last. Contact 318-793-8461 for more information.

### Found Poetry

Johnson Branch

**Tuesday, April 1-30, During Open Hours**

Stop by Johnson Library and celebrate Poetry Month! Create your own Found Poetry poem using phrases from old magazines and newspapers. Your poem will be displayed on our Found Poetry poem board throughout April. Contact 318-776-5153 for more information.

### Coffee, Color and Chill

Libuse Branch

**Saturday, April 12, 9:30 am to 11:00 am**

Patrons of all ages are welcome to come by the Libuse Branch between 9:30 and 11 AM to relax with a coloring page and a warm beverage. Step into early spring with a quiet library morning sipping coffee or tea and some peaceful coloring. Contact 318-443-7259 for more information.

### Earth Day Coloring Book

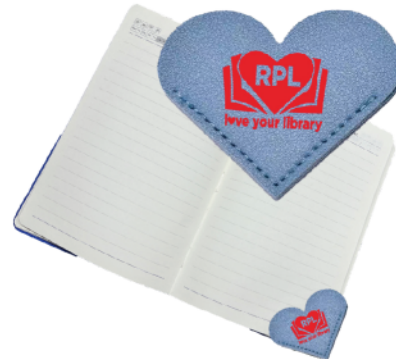
Johnson Branch

**Tuesday, April 22, During Open Hours**

Stop by Johnson Library and pick up your Earth Day Coloring Book in celebration of Earth Day. Available April 22nd while supplies last. Contact 318-776-5153 for more information.



*Celebrate with RPL all month!*



**Libraries are the HEART of our community!  
There is so much to LOVE about our Libraries  
and so much to celebrate all Month!**

**love your library**

National Library Week:	April 6th to 12th	National Bookmobile Day:	April 10th
National Library Workers Day:	April 8th	National Librarian Day:	April 16th
National Library Outreach Day:	April 9th	National Volunteer Week:	April 20th to 26th

**We LOVE our loyal patrons who LOVE RPL!  
We are showing you our LOVE all month  
with Giveaways, Prizes, Fun and LOVE!**



*Free Heart Bookmarks to All Patrons!\**  
*Play Library Bingo to be Entered to Win!\**

**Join us in sharing the LOVE!**  
**See your local branch to share in the LOVE!**

\*One bookmark per patron while supplies last. One childrens, one teen and one adult bingo drawing per branch.

## Children's Programs

### Crafty Tuesdays

Westside Regional Library

Tuesday, April 1, 3:30 pm to 4:15 pm

Tuesday, April 8, 3:30 pm to 4:15 pm

Tuesday, April 15, 3:30 pm to 4:15 pm

Tuesday, April 22, 3:30 pm to 4:15 pm

Tuesday, April 29, 3:30 pm to 4:15 pm

Come join us at Westside for a fun after school craft! Children from the ages 2-12 are welcome! Contact 318-442-2483 for more information.

### Creative Discovery Wednesdays

Martin Library

Wednesday, April 2, 4:00 pm to 5:00 pm

Wednesday, April 9, 4:00 pm to 5:00 pm

Wednesday, April 16, 4:00 pm to 5:00 pm

Wednesday, April 30, 4:00 pm to 5:00 pm

Join us every Wednesday at the library for Creative Discovery Wednesdays—a dynamic afternoon filled with fun, learning, and imagination! This engaging event offers a mix of activities to spark creativity and curiosity. Come with an open mind and leave with new friends, exciting projects, and a love for learning! Contact 318-442-7575 for more information.

### Easter Party at McDonald!

J.W. McDonald Branch

Thursday, April 10, 3:30pm to 4:30 pm

It's Easter time and what better way to celebrate than a party! Children, join us as we play games, have food, and crafts. We'll even have a visit from the Easter Bunny! Registration is required as seats are limited. See the RPL digital calendar to register. Contact 318-748-4848 for more information.

### Odd Holidays: Rubber Eraser Day

Martin Luther King, Jr. Branch

Tuesday, April 15, 4:00 pm to 5:00 pm

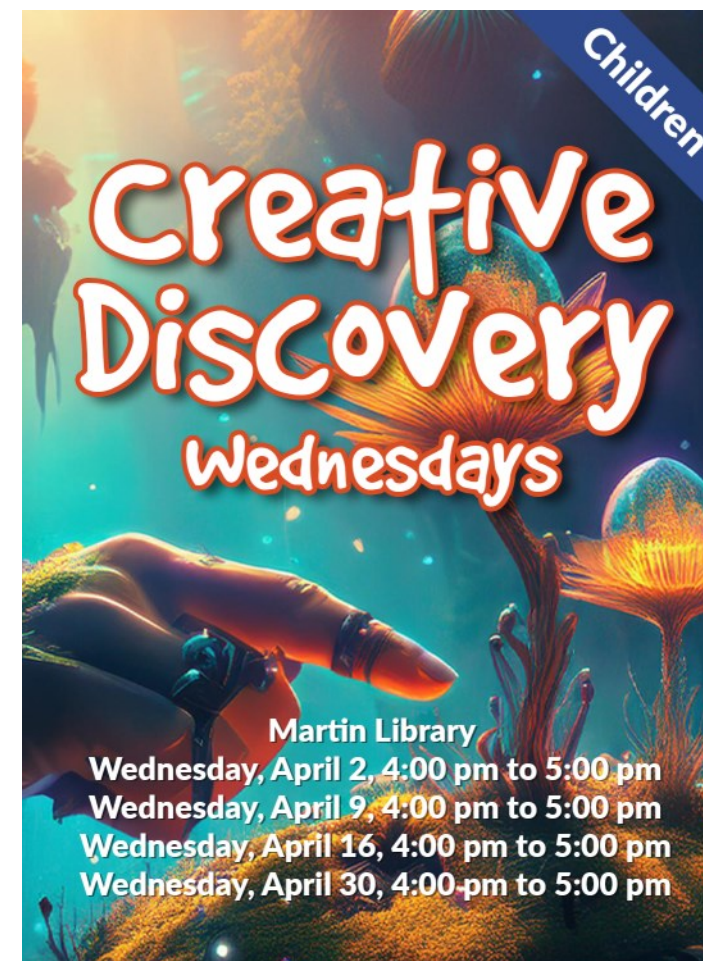
Join our new crafting series for children - Odd Holidays! Each month we will explore a silly or unknown holiday through music, crafts, and other fun activities. Stop by this month as we celebrate Rubber Eraser Day! We will be making "Erase-the-Page" and pencil eraser stamp art. Contact 318-445-3912 for more information.

### Kid's Social Hour

Martin Luther King, Jr. Branch

Monday, April 22, 4:00 pm to 5:00 pm

Kids can come in and plant a flower to help celebrate Earth Day! Contact 318-445-3912 for more information.





A vibrant background of numerous colorful, marbleized paper Easter eggs in shades of blue, purple, orange, and green. A blue diagonal banner in the top right corner reads "Children & Teen".

# Marbleized Paper Easter Eggs

See event guide for dates and locations.

A stylized illustration of a person's face in profile, wearing a VR headset. The background is a colorful, abstract digital space with geometric shapes and light effects. A blue diagonal banner in the top right corner reads "Children & Teen".

# VR EXPERIENCE

See event guide for dates and locations.

## Children's & Teen Programs

**Kid Librarian**  
Martin Library  
**Tuesday, April 1-30, 4:00 pm to 5:30 pm**  
One kid librarian is drawn per month to curate a display in the Martin Library Kids Area. Create a display of your favorite books! Children are welcome to pull books for their display from anywhere in the Kids sections! We encourage the kid librarian to write up a review a short summary or tell us why you liked it and have your photo taken with your display. Come to the circulation desk to fill out a form and we'll contact you when your name is drawn! Contact 318-442-7575 for more information.

**VR Experience**  
Westside Regional Library  
**Tuesday, April 1, 4:00 pm to 5:00 pm**  
Hineston Branch  
**Thursday, April 3, 4:00 pm to 5:00 pm**  
Libuse Branch  
**Saturday, April 5, 10:00 am to 11:00 am (Kids 10+)**  
**Saturday, April 5, 12:00 pm to 1:00 pm (Teens)**  
Main Library  
**Monday, April 7, 5:30 pm to 6:30 pm**  
Martin Library  
**Thursday, April 10, 4:00 pm to 5:00 pm**  
Johnson Branch  
**Friday, April 11, 3:00 pm to 4:00 pm**  
Robertson Branch  
**Monday, April 14, 2:30 pm to 3:30 pm**  
J.W. McDonald Branch  
**Thursday, April 17, 3:30 pm to 4:30 pm**  
Martin Luther King, Jr. Branch  
**Monday, April 21, 4:00 pm to 5:00 pm**  
Alfred Boyce Wettermark Branch  
**Wednesday, April 30, 4:00 pm to 5:00 pm**  
Come experience VR at the library! We will have a VR system ready at the branch and available to show off your Beat Saber skills. Contact the branch you plan to attend for more information.

**Fly & Soar: Paper Planes to Drones**  
Johnson Branch  
**Thursday, April 3, 3:15 pm to 4:45 pm**  
This library program for kids and teens is a hands-on, interactive event that blends creativity, engineering, and technology! Participants will start by designing and building their own paper airplanes, experimenting with different designs to see which flies the farthest or stays in the air the longest. After testing their paper planes, they'll take their piloting skills to the next level by test-flying a real drone! Under guided supervision, they'll learn the basics of drone operation, including takeoff, maneuvering, and landing. This program encourages STEM learning, problem-solving, and fun through both traditional and modern aviation techniques. Perfect for young engineers and future pilots, this event is a great mix of hands-on creativity and high-tech excitement! for children 11 and up. Registration is required as seats are limited. See the RPL digital calendar to register. Contact 318-776-5153 for more information.

**Marbleized Paper Easter Eggs**  
Libuse Branch  
**Thursday, April 3, 4:00 pm to 5:00 pm**  
J.W. McDonald Branch  
**Tuesday, April 8, 4:00 pm to 5:00 pm**  
Robertson Branch  
**Wednesday, April 9, 10:00 am to 11:00 am**  
**Wednesday, April 9, 2:30 pm to 3:30 pm**  
Martin Luther King, Jr. Branch  
**Thursday, April 10, 4:00 pm to 5:00 pm**  
Westside Regional Library  
**Saturday, April 12, 10:30 am to 11:30 am**  
Hop into creativity this spring at our Marbleized Paper Easter Eggs Crafting event! Join us for a fun, hands-on workshop where we will create beautiful marbled Easter eggs. Whether you're a crafting beginner or a seasoned pro, this event is a perfect way to explore the art of marbling while creating your own unique, festive decorations. Registration is required as seats are limited. See the RPL digital calendar to register. Contact the branch you plan to attend for more information.

A vibrant illustration of a nest filled with several colorful, decorated Easter eggs. A blue diagonal banner in the top right corner reads "Children & Teen".

# Easter Egg Hunt!

Martin Luther King, Jr. Branch  
**Saturday, April 5, 11:00am to 12:00 pm**

**Easter Egg Hunt!**  
Martin Luther King, Jr. Branch  
**Saturday, April 5, 11:00am to 12:00 pm**  
Kids and teens, come join us at your King branch for our annual Easter Egg Hunt along with a story time with Poncinella the Storyteller! Fun and prizes for all! Registration is required as seats are limited. See the RPL digital calendar to register. Contact 318-445-3912 for more information.



## Children's & Teen Programs

### Electric Ferris Wheel

Main Library

**Tuesday, April 8, 4:00 pm to 5:00 pm**

Join us for an exciting hands-on workshop where participants aged 12 and over will have the opportunity to build their very own electronic Ferris Wheel model! This interactive event will introduce kids to basic principles of engineering, circuitry, and mechanics as they work together to design and create a working Ferris wheel powered by simple electronics. By the end of the workshop, each participant will have a small, functioning Ferris wheel to take home. Registration is required as seats are limited. See the RPL digital calendar to register. Contact 318-445-2411 for more information.



### Floam Slime

Alfred Boyce Wettermark Branch

**Tuesday, April 15, 2:00 pm to 3:00 pm (Home School)**

Westside Regional Library

**Wednesday, April 16, 10:00 am to 11:00 am (Home School)**

Libuse Branch

**Thursday, April 17, 9:00 am to 10:00 am (Home School)**

Martin Library

**Thursday, April 24, 11:00 am to 12:00 pm (Home School)**

Johnson Branch

**Tuesday, April 22, 3:00 pm to 4:00 pm (Home School)**

Join us for a hands-on, squishy, and creative workshop where we'll be making colorful Floam Slime! Perfect for kids and families, this event will let you explore the exciting world of slime crafting. Floam slime is a textured version of the classic slime, filled with tiny foam beads for added fun and squishiness. Whether you're a first-timer or a slime expert, this event is perfect for anyone who loves to get creative with DIY crafts! Registration is required as seats are limited. See the RPL digital calendar to register. Contact the branch you plan to attend for more information.

### Cricut Craft Lab

J.W. McDonald Branch

**Tuesday, April 22, 1:30 pm to 3:30 pm**

Join us for a creative afternoon at the library where teens can unleash their inner designer using our Cricut machine! This workshop is perfect for beginners and experienced crafters alike. Whether you're looking to personalize your school supplies, make unique gifts, or just have fun with friends, this program has something for everyone. For patrons 11 to 17 years of age. Registration is required as seats are limited. See the RPL digital calendar to register. Contact 318-748-4848 for more information.

### Sunflower Growth with LED Circuit Fun

Libuse Branch

**Wednesday, April 23, 11:30 am to 12:30 pm**

Get ready for a fun, hands-on science and gardening experience! In this exciting library program, kids will learn how to germinate sunflower seeds in a mason jar and also explore the basics of circuits by lighting up their own LED grow lights. This activity combines nature, technology, and creativity as kids build their own circuit to power the LED lights that will help their seeds grow. For kids 10 and up. Registration is required as seats are limited. See the RPL digital calendar to register. Contact 318-443-7259 for more information.

### Home School Art: Beaded Mobile

Westside Regional Library

**Wednesday, April 23, 10:00 am to 11:00 am**

Join us for a creative and fun-filled workshop where kids will make their very own beaded mobiles! This hands-on crafting event encourages creativity, fine motor skills, and artistic expression. Participants will create unique mobiles using colorful beads, strings, and other decorative elements to hang and display at home. This program is perfect for children ages 6 and up who enjoy crafts and working with their hands. The event provides an excellent opportunity for children to learn about patterns, design, and even basic principles of balance and symmetry. Registration is required as seats are limited. See the RPL digital calendar to register. Contact 318-442-2483 for more information.

### Family STEM Night

Robertson Branch

**Thursday, April 24, 5:30 pm to 7:30 pm**

Join us for an exciting and hands-on Family STEM Night at the library! This interactive event is designed for families to explore the world of science, technology, engineering, and mathematics (STEM) through a fun and creative build challenge. Participants of all ages will use common household objects to design and build a unique structure, contraption, or invention, testing their problem-solving skills and imagination. After the build challenge, families can pizza and drinks. Please RSVP in advance as spaces are limited. Don't miss out on this creative and educational evening of fun at the library! Registration is required as seats are limited. See the RPL digital calendar to register. Contact 318-640-3098 for more information.

## Teen Programs

### McDonald Poetry Contest

J.W. McDonald Branch

**Tuesday, April 1-29, 4:30 pm to 5:30 pm**

Express yourself with words! Take part in our poetry contest through the month of April and win a prize! Join us on the 1st of April for a preliminary gathering for information on the contest as well as tips on how to get started. We will talk about the rules, guidelines, and ways to gather ideas. Then, meet us on the 15th of April for a second meeting where we will check the progress of those who need a little boost in motivation, or those who need help editing their works. Finally, we will gather on the 29th of April to celebrate the event! Contact 318-748-4848 for more information.

### DIY Crystal Jar

Martin Luther King, Jr. Branch

**Thursday, April 3, 4:00 pm to 5:00 pm**

Teens and Tweens are encouraged to come in to King Branch and learn how to create a DIY Crystal Jar. Registration is required as seats are limited. See the RPL digital calendar to register. Contact 318-445-3912 for more information.

### Teens Can...

Westside Regional Library

**Friday, April 4, 4:00 pm to 5:00 pm**

Teens can... Dare to play a surprising card game with friends at the Westside Regional Library. Come by and join the suspense of an Exploding Kittens competition — where the stakes are high, and the explosions are unexpected! We have snacks! Join us on the first Friday of the month! Contact 318-442-2483 for more information.

### Teen Cuisine

Martin Luther King, Jr. Branch

**Wednesday, April 9, 4:00 pm to 5:00 pm**

Unsure of your way around the kitchen? You want to increase your palate's delight? Come in and join us as we learn how to make a delicious treat. This month you will be socializing with your peers and learning how to make Slow-Cooker Meatball Sandwiches! The recipe will be available as well. Registration is required as seats are limited. See the RPL digital calendar to register. Contact 318-445-3912 for more information.

### McDonald Poetry Contest: Checkpoint!

J.W. McDonald Branch

**Tuesday, April 15, 3:30 pm to 4:30 pm**

Express your way with words! Take part in our poetry contest through the month of April and win a prize! Writer's of ALL skill levels are welcome! Join us on the 15th of April to check in and receive help or feedback on your poems. Interact with other writers and get help with editing your poem. Registration is required as seats are limited. See the RPL digital calendar to register. Contact 318-748-4848 for more information.

### New to Adulting?

Martin Library

**Thursday, April 17, 4:00 pm to 5:00 pm**

College and career planning can be overwhelming for everyone. The pressure to have your whole life figured out after high school is scary, but we are here to help. New to Adulting is focused on providing teens and young adults with FREE resources for discovering avenues for academic, occupational, and personal fulfillment in interest fields. Whether it be radiology or interpersonal communications, there is a niche for everyone. Simply knowing what resources and opportunities are available in certain fields is enough to change your life forever! We hope to see you there! Contact 318-442-7575 for more information.

### Phi Tau Beta: Teen Advisory Board

Martin Luther King, Jr. Branch

**Wednesday, April 23, 3:00 pm to 4:00 pm**

Join Phi Tau Beta, a new and exclusive group for teens, ages 13-18, who want to be leaders in their communities and be an active voice in the library. Each month we will meet to discuss things like what programs to put on, what new books, movies, or comics the library should have, and so much more! No sign up required, snack provided! Contact 318-445-3912 for more information.



### McDonald Poetry Contest: Finish Line!

J.W. McDonald Branch

**Tuesday, April 29, 4:00 pm to 5:30 pm**

This is the final day to turn in entries! Join us for a final gathering to celebrate the completion of the McDonald Poetry Contest, to which some contestants can read their entries. The winners of the contest will be decided in May! Registration is required as seats are limited. See the RPL digital calendar to register. Contact 318-748-4848 for more information.



Computer Classes



Seating is limited. Please register for Computer and Makerspace classes by accessing the new digital calendar on our website.

Google Sheets	Hineston Branch Wednesday, April 2 10:00 am to 11:00 am	PowerPoint is Microsoft's popular presentation program. Participants will create a presentation, apply formatting, insert clip art, and use transition effects.
Microsoft Publisher	Westside Library Tuesday, April 8 10:00 am to 11:00 am	Online word processing at your figure tips and on the go. Learn how to create a document in the web base application, collaborate, and share your document with others.
Beginning Microsoft Excel	Boyce Branch Thursday, April 10 10:00 am to 11:00 am	Take a look at the Windows 10 operating system. Learn about the features Windows 10 has to offer and how to customize them to your needs.
Beginning Microsoft Excel	Martin Library Monday, April 14 10:00 am to 11:00 am	Covers the basic functions of the office button and ribbon environment. Create a simple document and learn how to cut, copy & paste, spell check, format fonts, and colors, etc.
Google Slides	McDonald Branch Tuesday, April 15 10:00 am to 11:00 am	Design presentations online with the web based Google Slides Editor for school, work, events and more. The Slides Editor is part of the free Google Editor Suite.
Beginning Microsoft Word	Main Library Wednesday, April 16 9:00 am to 11:00 am	Online word processing at your figure tips and on the go. Learn how to create a document in the web base application, collaborate, and share your document with others.
Beginning Microsoft Word	Main Library Monday, April 21 3:30 pm to 5:30 pm	Design presentations online with the web based Google Slides Editor for school, work, events and more. The Slides Editor is part of the free Google Editor Suite.
Google Sheets	Libuse Branch Wednesday, April 23 10:00 am to 11:00 am	Covers the basic functions of the office button and ribbon environment. Create a simple document and learn how to cut, copy & paste, spell check, format fonts, and colors, etc.
Google Docs	Johnson Branch Friday, April 25 10:00 am to 11:00 am	Online word processing at your figure tips and on the go. Learn how to create a document in the web base application, collaborate, and share your document with others.
Beginning Internet	Robertson Branch Monday, April 28 10:00 am to 11:00 am	Learn basic web navigation skills using Internet Explorer while visiting several useful websites.

A group of diverse teenagers smiling and looking towards the camera. They are wearing casual clothing like hoodies and jackets. The background is slightly blurred, focusing on the group.

Teen

# Phi Tau Beta: Teen Advisory Board

Martin Luther King, Jr. Branch  
Wednesday, April 23, 3:00 pm to 4:00 pm

A collection of Mod Podge products, including bottles of Gloss-Lustre and Satin finishes. The bottles are white with red and yellow labels. The background is a soft, out-of-focus white.

Teen & Adult

# Mod Podge Easter Decor

Hineston Branch  
Friday, April 5, 11:00 am to 12:30 pm

A highly detailed and colorful abstract illustration of an Easter Bunny's face. The bunny's features are composed of intricate, swirling patterns in a wide range of colors including blue, green, yellow, orange, and purple. The background is dark with scattered colorful dots and shapes.

Teen & Adult

# ABSTRACT EASTER BUNNY

Libuse Branch  
Tuesday, April 1, 4:00 pm to 6:00 pm



## Adults & Teen Programs

### Abstract Easter Bunny

Libuse Branch

**Tuesday, April 1, 4:00 pm to 6:00 pm**

Adults and Teens are invited to come paint an abstract Easter bunny at the Libuse Branch. Registration is required as seats are limited. See the RPL digital calendar to register. Contact 318-443-7259 for more information.

### Mod Podge Easter Decor

Hineston Branch

**Saturday, April 5, 11:00 am to 12:30 pm**

Using decoupage techniques, we will create Easter decor that you can display for the season. Contact 318-793-8461 for more information.

### D&D Fridays

Main Library

**Friday, April 11, 3:00 pm to 5:00 pm**

**Friday, April 25, 3:00 pm to 5:00 pm**

Dive into fantasy realms, battle monsters, and embark on epic quest with friends every other Friday at the Main Library on Washington Street. Contact 318-445-2411 for more information.

## Adult Painting Programs

### Creative Canvases

Westside Regional Library

**Wednesday, April 2, 10:00 am to 12:00 pm**

**Friday, April 11, 5:00 pm to 7:00 pm**

Alfred Boyce Wettermark Branch

**Tuesday, April 15, 10:30 am to 12:30 pm**

Johnson Branch

**Thursday, April 17, 1:00 pm to 3:00 pm**

J.W. McDonald Branch

**Friday, April 25, 3:30 pm to 5:30 pm**

Westside Regional Library

**Tuesday, April 29, 5:30 pm to 7:30 pm**

Join our library's painting class and unlock your creativity! Led by an experienced instructor, you'll learn techniques and styles suitable for all levels. Connect with fellow art enthusiasts and enjoy a supportive environment. Come unleash your inner artist with us! Registration is required as seats are limited. See the RPL digital calendar to register. Contact the branch you plan to attend for more information.

### Watercolors for Adults

Main Library

**Wednesday, April 2, 10:00 am to 12:00 pm**

**Wednesday, April 16, 10:00 am to 12:00 pm**

Let your creativity flow during this watercolor class led by Lea Ryder Thomas. Registration is required as seats are limited. See the RPL digital calendar to register. Contact 318-445-2411 for more information.

### Art is Life!

Main Library

**Thursday, April 3, 10:00 am to 12:00 pm**

**Monday, April 14, 10:00 am to 12:00 pm**

**Monday, April 28, 5:30 pm to 7:30 pm**

Learn various acrylic painting techniques during this class led by local artist Alice McBride. Registration is required as seats are limited. See the RPL digital calendar to register. Contact 318-445-2411 for more information.

### Paint with Mrs. Linda

J.W. McDonald Branch

**Friday, April 4, 2:30 pm to 4:30 pm**

Come and enjoy painting class with Mrs. Linda. She'll give you plenty of words of encouragement and show that anyone can paint. All supplies will be provided. Registration is required as seats are limited. See the RPL digital calendar to register. Contact 318-748-4848 for more information.

### Abstract Easter Bunny

Libuse Branch

**Monday, April 7, 11:00 am to 1:00 pm**

Adults are invited to come and paint an abstract Easter bunny at the Libuse Branch Library. Registration is required as seats are limited. See the RPL digital calendar to register. Contact 318-442-7575 for more information.

### Easter Wine Glass Centerpiece

Martin Luther King, Jr. Branch

**Thursday, April 17, 4:00 pm to 5:30 pm**

Come in and learn how to make a festive Easter Wine Glass Centerpiece! Registration is required as seats are limited. See the RPL digital calendar to register. Contact 318-445-3912 for more information.

### Sip-N-Paint: Library Edition

Martin Luther King, Jr. Branch

**Monday, April 28, 5:00 pm to 6:00 pm**

It's your time to shine. Our very own, Mary Roberts will come bring your passion to light. This is not your trace or paint by number class. This is a worry free, kid free, no judgement zone artistry class. Relaxation and socialization is the end result. Registration is required as seats are limited. See the RPL digital calendar to register. Contact 318-445-3912 for more information.





# Adult Programs

## How To's Day

Martin Library

Tuesday, April 1, 10:00 am to 12:00 pm

Tuesday, April 15, 10:00 am to 12:00 pm

Unlock your creativity and master new skills at How To's Day! This hands-on program is perfect for adults eager to explore the world of DIY crafts and Cricut machines. Join us for an engaging workshop where you'll learn to use a Cricut machine, dive into a variety of crafting techniques, and bring your unique ideas to life. Whether you're a seasoned crafter or a complete beginner - we will learn and explore together. Take this opportunity to enhance your crafting skills and connect with fellow DIYers "See you at How To's Day"! Registration is required as seats are limited. See the RPL digital calendar to register. Contact 318-442-7575 for more information.

## Color Me Chill

Hineston Branch

Tuesday, April 1-30, During Open Hours

Adults, treat yourself to an oasis of relaxation and creativity! Come color and chill with us anytime you want. Need a break? Come on in and relax and get one of our Color Me Chill coloring packs available at the Customer Service Desk. Packs are not for check out and are for in-library use only. Contact 318-793-8461 for more information.

## Bayou Bonds: What's Your Game?

Johnson Branch

Thursday, April 3, 10:00 am to 11:30 am

What's your game? Come show us your skills at playing board games and card games (Monopoly, checkers, Spades, etc.) A chance to have fun and socialize. Registration is required as seats are limited. See the RPL digital calendar to register. Contact 318-776-5153 for more information.

## Basic Computer Training

Martin Luther King, Jr. Branch

Wednesday, April 2, 4:00 pm to 5:00 pm

Wednesday, April 16, 4:00 pm to 5:00 pm

Wednesday, April 30, 4:00 pm to 5:00 pm

This is a starter course for any basic level computer skills questions you have such as starting up a phone, using a keyboard, etc. For more specific training in Word, Excel, and so on, check out our other Computer classes! Registration is required as seats are limited. See the RPL digital calendar to register. Contact 318-445-3912 for more information.

## Aviation Innovators of Central Louisiana

Martin Library

Thursday, April 3, 4:00 pm to 5:00 pm

Join author and historian Michael Wynne as he uncovers the fascinating stories of two Louisiana pioneers in aviation—Paul Leo Ortego and Charles Frederick Page. Wynne will explore Ortego's creation of the first working helicopter in Alexandria, Louisiana, in the early 20th century. He'll also highlight the remarkable Charles Frederick

Page, an African American inventor from Pineville who patented a revolutionary airship design in 1906. Despite the racial barriers of the Jim Crow era, Page's innovations in stability, propulsion, and control advanced airship technology. Don't miss this chance to learn about these visionary inventors and their lasting contributions to aviation. Contact 318-442-7575 for more information.

## Self Care Saturday

Martin Library

Saturday, April 5, 10:00 am to 11:00 am

Join us for Self Care Saturday a relaxing DIY workshop where you'll create soothing bath bombs, refreshing body scrubs, calming mists or practice meditation. Discover the joy of crafting personalized self-care products with guidance and materials provided. Enjoy a peaceful, creative afternoon, connect with others, and take home beautifully handmade items designed to enhance your self-care routine. Unwind, create, and pamper yourself with us! Contact 318-442-7575 for more information.

## For the Love of Food!

Main Library

Monday, April 7, 5:30 pm to 7:30 pm

Chef Izabella Petersen joins us on the library demonstration stage with her favorite recipes! Registration is required as seats are limited. See the RPL digital calendar to register. Contact 318-445-2411 for more information.

## Daisy with Frame Diamond Art

Johnson Branch

Wednesday, April 9, 1:00 pm to 3:00 pm

Come join us to create your very own Daisy Frame Diamond Art painting at Johnson Library. Registration is required as seats are limited. See the RPL digital calendar to register. Contact 318-44776-5153 for more information.

## Westside Fit

Westside Regional Library

Thursday, April 10, 9:00 am to 10:00 am

Thursday, April 24, 9:00 am to 10:00 am

Join us for a fitness session that combines chair aerobics and yoga led by an instructional DVD. Contact 318-442-2483 for more information.

## DIY Bath Salt

Martin Luther King, Jr. Branch

Friday, April 11, 4:00 pm to 5:30 pm

Come in and learn how to make Eucalyptus Scented Bath Salts to help combat stress during National Stress Awareness month! Registration is required as seats are limited. See the RPL digital calendar to register. Contact 318-445-3912 for more information.

# Adult Programs

## Social Saturdays

Martin Luther King, Jr. Branch

Saturday, April 12, 10:00 am to 11:00 am

We aim to stimulate your life with social interactions and brain reactions. Whether it be a craft or learning a new technique, this class aims to keep the mind working. Registration is required as seats are limited. See the RPL digital calendar to register. Contact 318-445-3912 for more information.

## Get in Line!

Martin Luther King, Jr. Branch

Saturday, April 12, 1:00 pm to 2:30 pm

There are many benefits of line dancing. It can help stimulate the brain, reduce stress, strengthen bones, etc. Join us the second Saturday of April as a local line dance instructor comes out to help you get your boots on the ground! We are also going to help you enjoy the benefit of socialization, tone body and have fun! Registration is required as seats are limited. See the RPL digital calendar to register. Contact 318-445-3912 for more information.

## Veterans Helping Veterans

Martin Luther King, Jr. Branch

Monday, April 14, 5:00 pm to 8:00 pm

Communities have many men and women who sacrificed for the country and their families. In partnership with An-

thony Elie, veterans come together to share resources available to them and in supporting one another, they work towards a better quality of life. Contact 318-445-3912 for more information.

## Books & Bites!

Alfred Boyce Wettermark Branch

Tuesday, April 22, 10:00 am to 12:00 pm

Join us monthly for Books & Bites, a fun cooking demonstration where you'll learn new recipes, enjoy tasty samples, and discover cookbooks from our collection. Each session features a recipe inspired by books, regional flavors, or seasonal ingredients. Registration is required as seats are limited. See the RPL digital calendar to register. Contact 318-793-5954 for more information.

## Musical Bingo: 1960's

Johnson Branch

Saturday, April 26, 11:00 am to 12:00 pm

Get ready to groove and test your knowledge of one of the most iconic decades in music history with 1960s Musical Bingo! This fun and interactive activity combines the excitement of bingo with the classic hits from the 1960s. Registration is required as seats are limited. See the RPL digital calendar to register. Contact 318-776-5153 for more information.





Adult Programs

AS YOUNG  
AS YOU FEEL

J.W. McDonald Branch  
April 1, 10:00am to 11:30am  
318-748-4848

Robertson Branch  
April 7, 10:00am to 11:30am  
318-640-3098

Alfred Boyce Wettermark Branch  
April 8, 10:00am to 11:30am  
318-793-5954

Westside Regional Library  
April 10, 10:00am to 11:30am  
318-442-2483

Johnson Branch  
April 15, 10:00am to 11:30am  
318-776-5153

Main Library  
April 17, 10:00am to 11:30am  
318-445-2411

Martin Library  
April 21, 10:00 am to 11:30 am  
318-442-7575

Libuse Branch  
CANCELLED  
318-443-7259

Martin Luther King, Jr. Branch  
April 28, 10:00am to 11:30am  
318-445-3912



Genealogy Research Programs

Rebels, Rogues, Royals and Renegades

Alfred Boyce Wettermark Branch

Wednesday, April 11, 10:30 am to 11:30 am

Learn to conduct self-directed research using Ancestry Library Edition. Discover your heritage and create a personal family heritage journal to document the journey. Learn about Ancestry Library Edition and other databases to create and compile a personal family heritage. Meets monthly. Registration is required as seats are limited. See the RPL digital calendar to register. Contact 318-793-5954 for more information.

Genealogy Club

Main Library

Thursday, April 24, 4:00 pm to 5:30 pm

Have you ever wanted to search your ancestry. Are you already researching your family tree but are stuck. Come

join us for the Genealogy Club where you will meet people just like you that are willing to share their knowledge and help others find with their ancestry journey. Registration is required as seats are limited. See the RPL digital calendar to register. Contact 318-445-2411 for more information.



A LIBRARY BRANCH FOR EVERYONE.

ALFRED BOYCE WETTERMARK  
BRANCH

1177 HAYWOOD B. JOINER ST.  
BOYCE, LA 71409  
318-793-5954  
TUE & THURS 9AM-6PM  
WED & FRI 1PM-6PM  
SAT 9AM-1PM

HINESTON BRANCH

1810 HWY. 121  
HINESTON, LA 71438  
318-793-8461  
TUE & THURS 9AM-6PM  
WED & FRI 1PM-6PM  
SAT 9AM-1PM

JOHNSON BRANCH

1610 VETERANS DR.  
LECOMPTE, LA 71346  
318-776-5153  
TUE & THURS 9AM-5PM  
WED & FRI 1PM-5PM  
SAT 9AM-1PM

J.W. McDONALD MEMORIAL  
BRANCH

1075 HWY. 497  
GLENMORA, LA 71433  
318-748-4848  
TUE & THURS 9AM-6PM  
WED 1PM-5PM  
FRI 1PM-6PM  
SAT 9AM-1PM

LIBUSE BRANCH

6375 HWY. 28 E  
PINEVILLE, LA 71360  
318-443-7259  
MON-FRI 9AM-6PM  
SAT 9AM-1PM

STORYTIME!

ALFRED BOYCE WETTERMARK BRANCH  
STORYTIME UPON REQUEST

MARTIN LUTHER KING, JR. BRANCH  
STORYTIME UPON REQUEST

JOHNSON BRANCH  
STORYTIME UPON REQUEST

LIBUSE BRANCH  
LIBRARY BABIES  
TUESDAYS 10:00AM-10:30AM  
STORYTIME  
THURSDAYS 10:30AM-11:30AM

MAIN LIBRARY  
STORYTIME  
WEDNESDAYS 10:30AM-11:00AM

MARTIN LIBRARY  
STORYTIME  
FRIDAYS 10:00AM-10:30AM

J.W. McDONALD MEMORIAL BRANCH  
LIBRARY BABIES  
THURSDAYS 9:30AM-10:00AM  
STORYTIME  
THURSDAYS 10:00AM-11:00AM

ROBERTSON BRANCH  
EXPLORE & DISCOVER TIME  
WEDNESDAYS 10:00AM-11:00AM

WESTSIDE REGIONAL LIBRARY  
TODDLER TIME  
THURSDAYS 10:00AM-10:30AM  
STORYTIME  
FRIDAYS 10:00AM-10:30AM

HINESTON BRANCH  
STORYTIME  
THURSDAYS 10:30AM-11:00AM

MAIN LIBRARY

411 WASHINGTON ST.  
ALEXANDRIA, LA 71301  
318-445-2411  
MON-FRI 9AM-6PM  
SAT 9AM-1PM

MARTIN LIBRARY

801 W. SHAMROCK ST.  
PINEVILLE, LA 71360  
318-442-7575  
MON-FRI 9AM-6PM  
SAT 9AM-1PM

MARTIN LUTHER KING, JR.  
BRANCH

1115 BROADWAY AVE.  
ALEXANDRIA, LA 71301  
318-445-3912  
MON-FRI 9AM-6PM  
SAT 9AM-1PM

ROBERTSON BRANCH

809 TIOGA HIGH SCHOOL RD.  
PINEVILLE, LA 71360  
318-640-3098  
MON-FRI 9AM-6PM  
SAT 9AM-1PM

WESTSIDE REGIONAL  
LIBRARY

5416 PROVINCE PL.  
ALEXANDRIA, LA 71303  
318-442-2483  
MON-FRI 9AM-6PM  
SAT 9AM-1PM



PROMOTING LITERACY, GUIDING DISCOVERY, CHANGING LIVES... FOR ALL.